

3-in-1 Dual-probes Multipurpose Ultrasound

KONTED C10TX

Unveiling the Unseen

Only
182g

Dual
128 Elements

Triple
Certified



The Future of Ultrasound is in Your Pocket



Beijing Konted Medical Technology Co., Ltd was founded in 2014, is a high-tech enterprise **focusing** on the research, development, production and sales of handheld ultrasound products.

Innovative Design

Revolutionary Design

Smaller than an iPhone. More powerful than ever imagined.



Ultra-Light

Only 182g, lighter than most smartphones



Dual Batteries

Built-in dual batteries with wireless charging



Pocket-Sized

Smaller than an iPhone, fits in your pocket



Dual Heads

Convex + Linear + Cardiac in one device



Technical Excellence

Three Probes. One Device.

Professional-grade performance in a pocket-sized package.



CONVEX

Frequency: 2.5/5MHz, 3.5/5MHz

Depth: 90-305mm

Radius: R45

Scan Angle: 48°

Applications

Abdominal imaging

Obstetrics

General diagnostics



LINEAR

Frequency: 7.5/10MHz

Depth: 20-100mm

Footprint: L25mm

Applications

Musculoskeletal

Vascular

Superficial structures



CARDIAC

Frequency: 2.2/3.6MHz

Depth: 90-240mm

Footprint: 25x16mm

Scan Angle: 80°

Applications

Cardiac imaging

Echocardiography

Seamless Integration

Universal Connectivity

Connect to any device, anywhere, anytime.

Dual Connectivity



Wi-Fi

Built-in Wi-Fi
802.11g/20MHz
5G compatible
450Mbps transfer rate



USB-C

USB Type-C

Dual USB-C ports
Fast data transfer
Charge while using
Universal compatibility

Power Features



Dual Batteries

Built-in dual batteries
Wireless charging capability
Support working while charging
Extended operation time

Universal Compatibility



iOS 11.0 or later

iPhone 7+ to iPhone 16+ series, iPad Air 2, iPad mini-5, iPad Pro series



Android 14 or later

Compatible with most modern Android smartphones and tablets



Windows 10 or later

Full compatibility with Windows PCs and tablets



Trust & Reliability

Quality Assurance

Meeting the highest international standards for medical device safety and efficacy.

Triple Certified

The KONTED C10TX meets rigorous international standards for medical device safety, performance, and quality management.



US Food & Drug
Administration



European Conformity



International Standards
Organization

Quality Commitment

Safety First



Rigorous testing ensures patient
and operator safety in all clinical
environments.

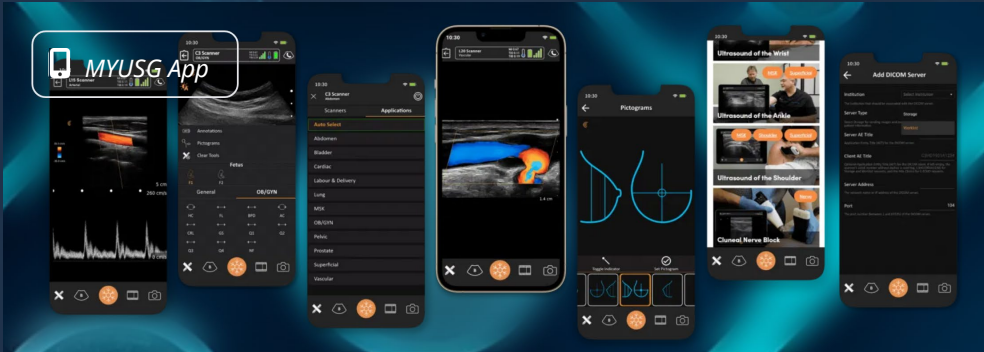
Precision Engineering



Advanced manufacturing
processes ensure consistent
performance and reliability.

MYUSG App: Your Diagnostic Command Center

Intuitive Interface



Download on
App Store



Get it on
Google Play

The MYUSG app transforms your smart device into a professional ultrasound workstation with powerful diagnostic tools.

Measurements:

B: Length, Area/Circumference, Angle, Trace, Distance

GA(CRL,BPD,GS,FL,HC,AC) EFW(BPD,FL)

B+M: Heart rate, Time, Distance, LVID(LVIDd, LVIDs, EF, SV)

B+PW: Velocity, Heart rate (2), S/D, Depth

Key Features



Cineplay

100/200/500/1000 frames



Login Password Function

Administrator password and operator password options



Playback Modes

Auto & manual playback



Multiple Formats

JPG, AVI, MP4, DICOM



Multilanguage Support

Multiple Language Interface
Greek language not available



Real-time Imaging

24 frames per second

Advanced Capabilities



Measurements

Precise distance, area, and other tools



Auto VTI measurement

Used to evaluate heart valve function, cardiac output, and hemodynamic status



Image Controls

Fine-tune gain, depth, and focus



Sharing

Secure sharing via email or PACS



Volume Measurement

In dual-screen mode, by measuring the length + width in one image and the height in another



Cloud Storage

Secure backup of patient data and Cases In studies

Versatile Diagnostics

Professional imaging across multiple specialties.



Cardiac

*B-mode cardiac imaging
Color Doppler
Pulsed Wave (PW) Doppler
Echocardiography*



Abdominal

*Liver assessment
Kidney imaging
Gallbladder visualization
General abdominal scanning*



Vascular

*Artery assessment
Venous evaluation
Color Doppler flow
Peripheral vascular studies*



Musculoskeletal

*Joint assessment
Tendon evaluation
Nerve visualization
Sports medicine applications*



Obstetric Care

*Safe, reliable fetal imaging with
exceptional clarity for obstetric
assessment in clinical settings.*



Primary Care

*Perform quick, non-invasive
assessments, potentially reducing
the need for referrals.*

The Future of Ultrasound

Better Ultrasound Better Life

Konted C10TX doesn't just change how you practice medicine.

*It **transforms** where and when **diagnostic imaging** becomes possible.*

From emergency departments to remote clinics, high-quality ultrasound is always within reach.

Exclusive Distribution



Avittia IKE
Greece & Cyprus



21, Metamorfoseos Sotiros str
17455 Alimos, Greece

Avittia

+30 210 9822087



corporate@avittia.com



www.avittia.com

